

CIRTEM⁺
POWER OPTIMISED

&



Electromobility

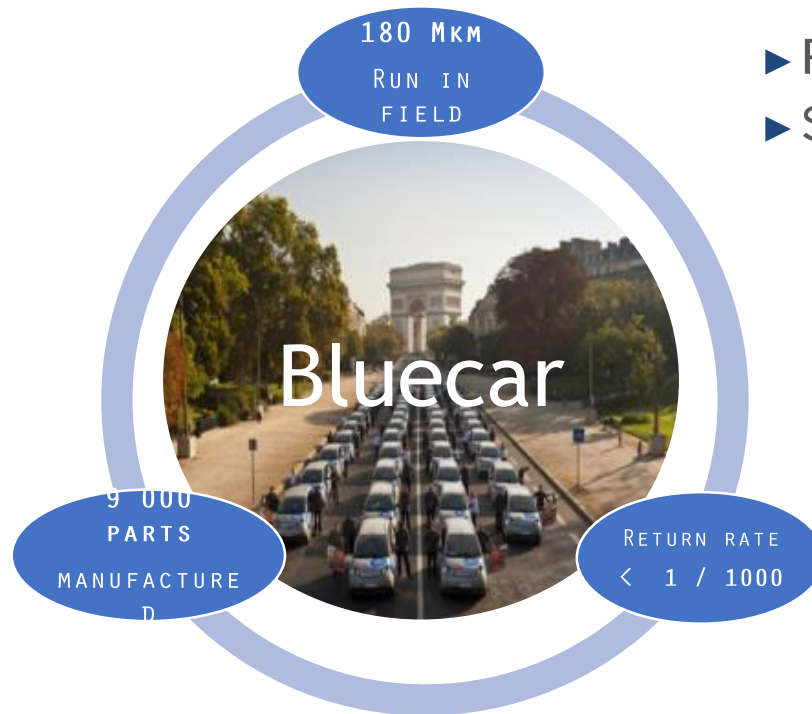
GCE and DLE | November 2018





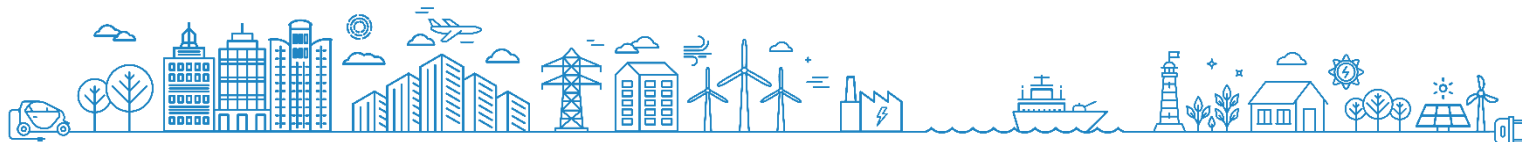
Electromobility

3-phase IGBT motor drive for permanent magnet synchronous motor PMSM



Innovative car-sharing

- ▶ Freescale MPC 5534 control
- ▶ Specs :
 - 450 V DC battery / 170 A by phase
 - Liquid cooling
 - 2 CAN buses

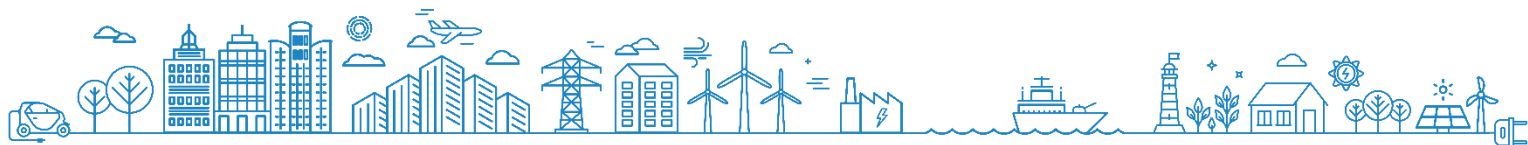




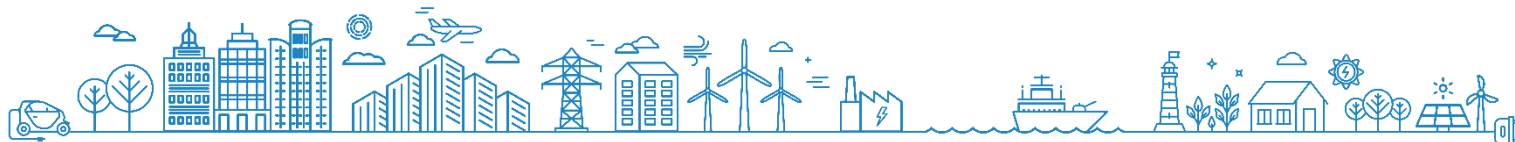
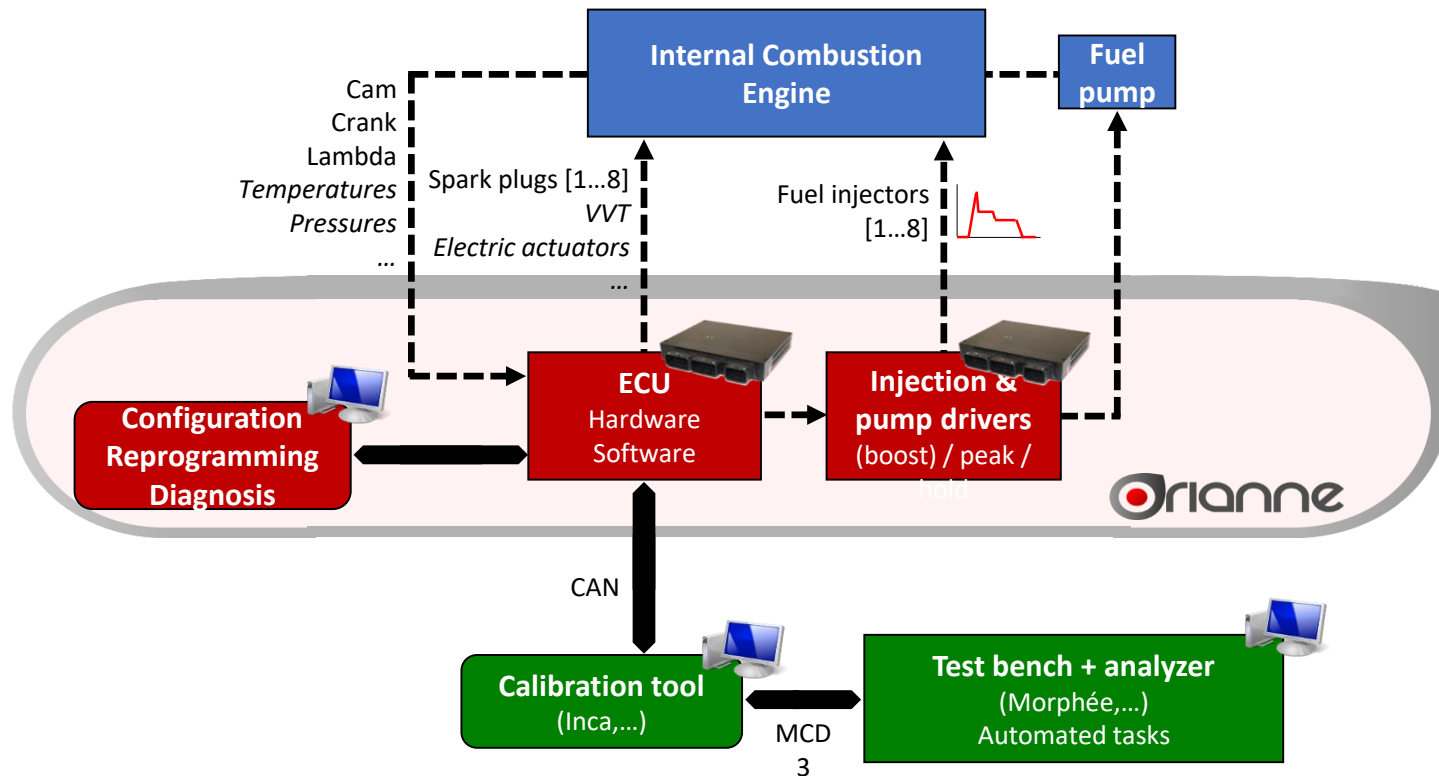
Blue Bus

Battery booster 90 kW

- Reversible DC-DC
- IGBT interlaced leg chopper
- μ C control
- Liquid cooling
- Power 90 kW
- Udc max 750 V



Open ECU for Engines *to Develop and Test EMS Functions*



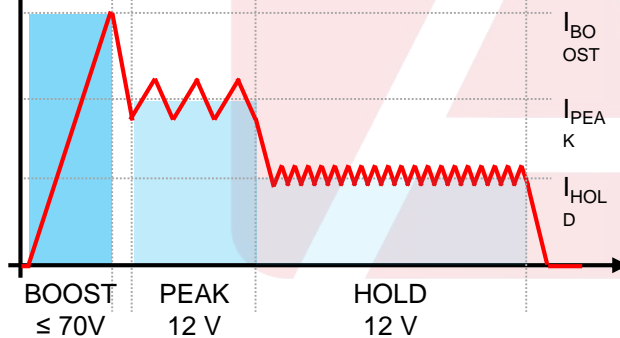
A dedicated **power stage** for driving inductive loads such as **high-speed electro valves**, incl. fuel injectors.
High voltage internally generated ensures fast opening

ASPIN can drive :

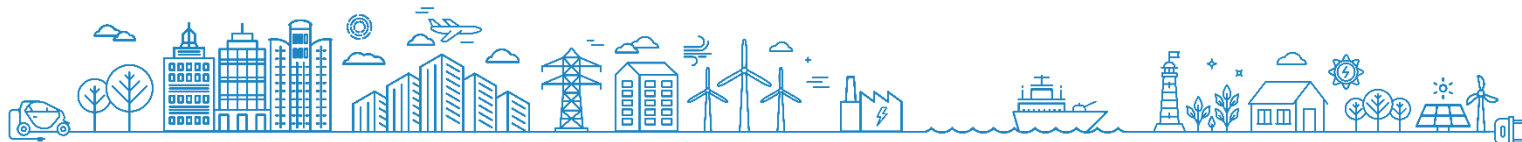
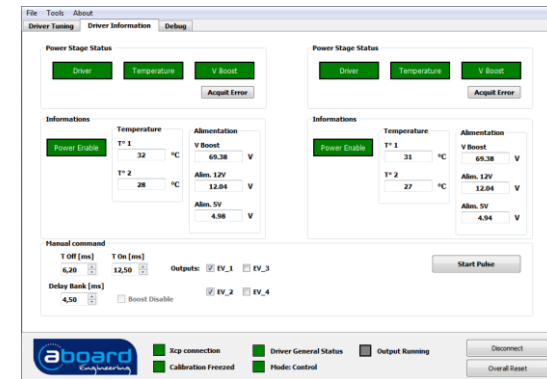
- **Low impedance solenoids**, such as
 - High speed electro valves
 - Fuel injectors for GDI or Diesel applications
 - HP fuel pump for GDI applications
- **High impedance solenoid** loads like MPI injectors



Programmable current profiles User Interface



Dedicated





Sales Manager

Dominique LOZE

- 📱 +33 629 507 776
- ☎️ +33 582 952 190
- ✉️ dominique.loze@cirtem.com

Sales Engineer

Guillaume CASTANIE

- 📱 +33 769 876 086
- ☎️ +33 567 205 042
- ✉️ gce@cirtem.com

www.cirtem.com

www.aboard-eng.com